



INSULATUS

INSULATING LIFT TECHNOLOGY



INSULATING LINKS NON-CONDUCTIVE TAG LINES

LOAD INSULATOR®

.....The first of the **NEW GENERATION SMART** insulating links

The Load Insulator® is a highly engineered, high performance, load bearing insulator designed to be fitted to the end of the crane's load line.

It will insulate and protect personnel in contact with the load, from electrocution, in the event of the crane or load line contacting an overhead power line. It's internal 'brain' will perform a self-check every day to ensure that it remains a safe and reliable insulating device.

It offers a **FIT & FORGET** solution for power line safety.

The Load Insulator® meets or exceeds the requirements of the American National Standard in all tests.

American National Standard ANSI/CPLSO 14 (2016) Testing Criteria*



*See Testing Glossary for more information

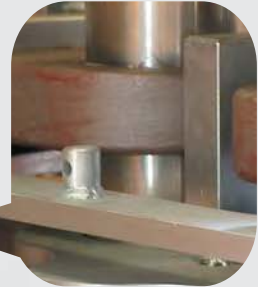
Shockproof

Enviroproof

Freezeproof

Waterproof

High Tensile Steel Skeleton



Lifting eye compatible with common rigging

Advanced Polymer Shell



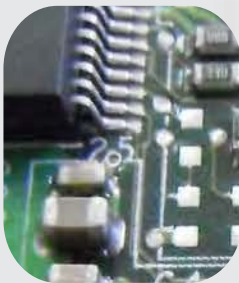
Shockproof
Enviroproof
Freezeproof
Waterproof

Unique Design



Helps prevent contamination & surface tracking of high voltage electricity

Internal Brain



Features:

Self-Test
Data Log
Warning Alert



TAGLINE INSULATOR®

.....The **Personal Defense System**

Any tag line rope will conduct high voltage electricity if it becomes contaminated or wet.

The TagLine Insulator® from Insulatus is the world's only insulating link specifically designed for use in a tag line rope.

It is designed to protect ground crew and riggers working with elevated loads and using tag line ropes in close proximity to live power lines.

Use it in the wet, the dirt, the cold, anywhere...

The TagLine Insulator® **will protect whatever the conditions.**



Shockproof

Enviroproof

Freezeproof

Waterproof

Lightweight



Portable and lightweight to retain 'feel' of the guiding line.

Advanced Polymer Shell



Shockproof

Enviroproof

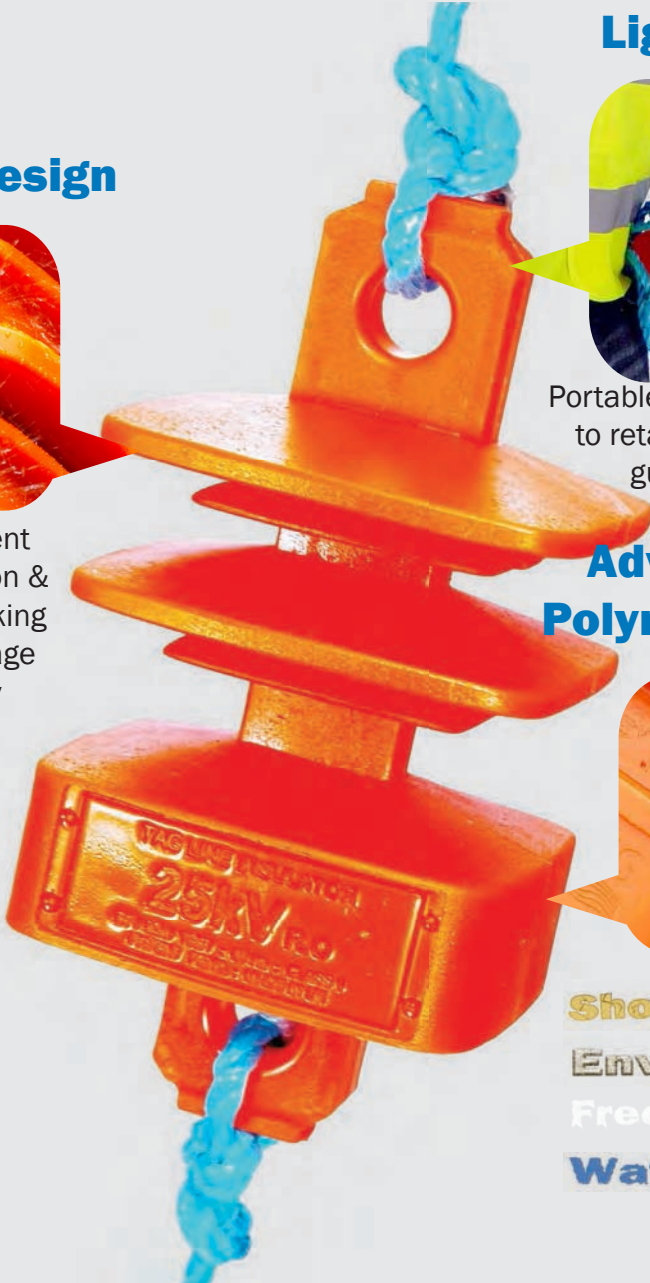
Freezeproof

Waterproof

Unique Design



Helps prevent contamination & surface tracking of high voltage electricity



Glossary of American National Standard Test Procedures



Accelerated Weathering

To verify aging characteristics of polymeric exterior in response to prolonged UV exposure



Test 9 - Wet Withstand

To measure the resistance to sustained vertical and horizontal water spray.



Test 1 - Fatigue

To verify fatigue characteristics experienced under continued cyclic load



Test 10 - Clean Fog

Establish performance under conditions of medium contamination.



Test 2 - Thermal

Thermal resistance to sub-zero temperatures up to -30°C for sustained period.



Test 11 - Operational Envelope

Establish performance of unit under conditions of heavy and very heavy contamination.



Test 3 - Impact

Measure impact resistance of unit when dropped onto solid concrete floor from specified height.



Test 12 - Warning Feature

Verify performance under heavy contamination: audible alarm and self-test voltage.



Test 4 - Sudden Load Release

Verify impact resistance from sudden snatched load release.



Test 13 - Capacitance

Verify the capacitance of a contaminated unit.



Test 5 - Torsion

Verify strength in response to a sustained torsional load.



Test 14 - High Voltage Puncture

Verify the internal dielectric strength of the unit after all preceding tests.



Test 6 - Compression

Verify the strength of a unit when subjected to a vertical compression load.



Test 15 - Ultimate Tensile

Verify the ultimate tensile strength of the unit.



Test 7 - Bending

Verify the strength of the unit when exposed to a bending force.



Test 16 - Verification

Internally examine and compare tested units to non-tested units.



Test 8 - Seal Pump

Verify the water tight seal to ensure no internal water ingress.

Size & Dimensions

Part Number	Model	Safe Working Load	Pin Diameter	Hole to Hole	Weight
LMTAGINS	TagLine	Not For Lifting	1"	8"	3lb
5TV2	5t	5t	1"	24"	99lb
10TV2	10t	10t	1.5"	24"	114lb
25TV2	25t	25t	2"	28"	213lb
55TV2	55t	55t	3"	34"	474lb
120TV2	120t	120t	4"	45"	1232lb

Specifications

Model	TAGLINE [®] INSULATOR [®]	LOAD [®] INSULATOR [®]
Rated Operating Voltage (RO)	25 kV rms	25 kV rms
Operating Temperature	-30 °C to + 60 °C	-30 °C to + 60 °C
Lightning Strike	Not lightning proof	Not lightning proof
Warning Device	N/A	Via onboard diagnostics
Pollution Tolerance	Exceeds American National Standard	Exceeds American National Standard
Duty Rating	Not For Lifting	ISO M5



Disclaimer:

Whilst every attempt has been made to ensure that the information contained in this publication is as accurate and current as possible. However, inaccuracies, errors, or omissions may occur, and details of the specifications, may be subject to change at any time without prior notice. To reduce the impact of any misunderstanding we advise you confirm details with our sales department prior to order placement.

INSULATING LINKS



INSULATUS
INSULATING LIFT TECHNOLOGY 

www.insulatus.com

NON-CONDUCTIVE
TAG LINES